

# KOMATSU

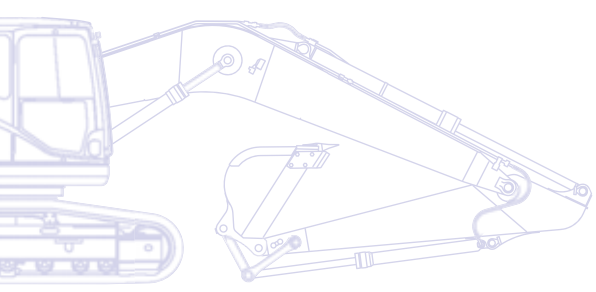
PRELIMINARY

**HB**  
**215LC**



## Hydraulic Excavator **HB215LC-2**

Hybrid



**ENGINE POWER**  
110 kW / 148 HP @ 2.000 rpm

**OPERATING WEIGHT**  
22.580 - 23.440 kg

**BUCKET CAPACITY**  
max. 1,68 m<sup>3</sup>

# Hybrid

## Improved Komatsu Hybrid System

- Third generation-proven technology
- Reliable and durable hybrid system components
- Electric swing to capture and regenerate energy
- New engine and hydraulic pump control technology
- Massive reduction in fuel consumption



## Highest safety standards

- Safe SpaceCab™, ROPS compliant with ISO12117-2:2008
- Rear view camera, side view camera optional
- Optimal jobsite safety
- Safe access, easy maintenance
- Falling Object Protection System (FOPS) optional
- Additional working lights (optional)
- Lower wiper (optional)

## Total versatility

- Increased stability
- Ideal for high productivity material moving
- 6 working modes
- Increased digging forces
- Built-in versatility



Komatsu Wireless  
Monitoring System



Complimentary maintenance  
program for customers

## Fuel consumption

Based on typical work pattern collected via KOMTRAX™

Reduced by **30%** / **20%** / **5%**  
(vs. PC210-8) (vs. PC210-10) (vs. HB215LC-1)

## First-class operator comfort

- Wide, spacious cab
- Low noise design, low vibration levels
- Pressurised cab
- Large, widescreen TFT monitor panel
- Joysticks with proportional control button for attachments



## Quality you can rely on

- Reliable and efficient
- 5 years or 10.000 h warranty on Hybrid components
- Rugged design
- Komatsu-quality components
- Extensive dealer support network



Third generation-proven technology Komatsu Hybrid system



An electric swing motor is used in place of the usual hydraulic swing motor and is designed to recover energy during swing braking.



New engine fully complies with EU Stage IIIB and EPA Tier 4 interim



Eco-gauge, idle caution and adjustable idle shut-down to further reduce fuel consumption



# Hydraulic Excavator

## HB215LC-2

### ENGINE

Model .....	Komatsu SAA4D107E-2
Type .....	Common rail direct injection, water-cooled, emissionised, turbocharged, after-cooled diesel
Engine power	
at rated engine speed .....	2.000 rpm
ISO 14396 .....	110 kW / 148 HP
ISO 9249 (net engine power) .....	104 kW / 139 HP
No. of cylinders .....	4
Bore x stroke .....	107 x 124 mm
Displacement .....	4,46 ltr

### ENVIRONMENT

Engine emissions .....	Fully complies with EU Stage IIIB and EPA Tier 4 interim exhaust emission regulations
Noise levels	
LwA external .....	102 dB(A) (2000/14/EC Stage II)
LpA operator ear .....	69 dB(A) (ISO 6396 dynamic test)
Vibration levels (EN 12096:1997)*	
Hand/arm .....	≤ 2,5 m/s <sup>2</sup> (uncertainty K = 0,51 m/s <sup>2</sup> )
Body .....	≤ 0,5 m/s <sup>2</sup> (uncertainty K = 0,30 m/s <sup>2</sup> )

\* for the purpose of risk assessment under directive 2002/44/EC, please refer to ISO/TR 25398:2006.

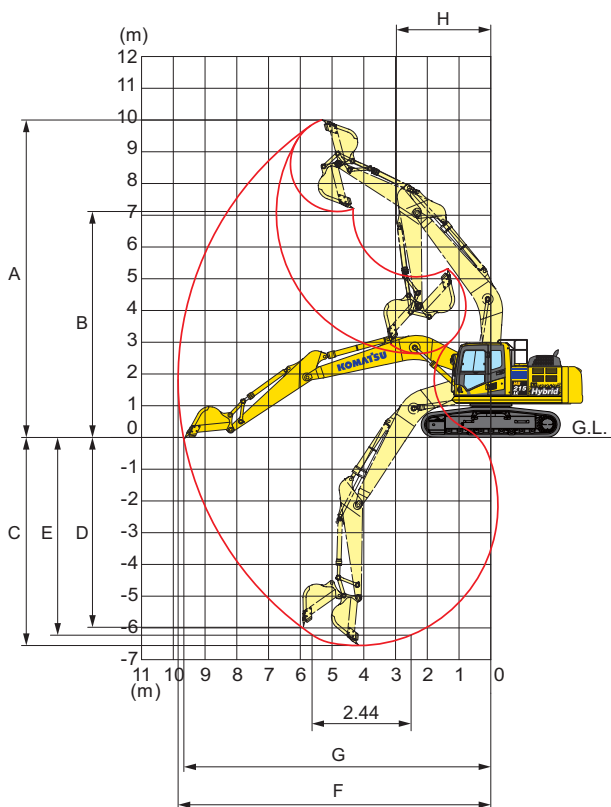
### UNDERCARRIAGE

Construction .....	X-frame centre section with box section track frames
Track assembly	
Type .....	Fully sealed
Shoes (each side) .....	49
Tension .....	Combined spring and hydraulic unit
Rollers	
Track rollers (each side) .....	9
Carrier rollers (each side) .....	2

### HYDRAULIC SYSTEM

Type .....	HydrauMind. Closed-centre system with load sensing and pressure compensation valves
Main pump .....	Variable-capacity piston pump
Pumps for .....	Boom, arm, bucket and travel circuits
Maximum pump flow .....	452 ltr/min
Hydraulic motors:	
Travel .....	2 x axial piston motor with parking brake
Relief valve settings:	
Implement .....	380 bar
Travel .....	380 bar
Pilot .....	33 bar

### WORKING RANGE



### ARM LENGTH

**2,9 m**

A	Max. digging height	10.000 mm
B	Max. dumping height	71.10 mm
C	Max. digging depth	6.620 mm
D	Max. vertical wall digging depth	5.980 mm
E	Max. digging depth of cut for 2,44 m level	6.370 mm
F	Max. digging reach	9.875 mm
G	Max. digging reach at ground level	9.700 mm
H	Min. swing radius	3.040 mm

### OPERATING WEIGHT (APPR.)

Triple grouser shoes	Operating weight	Ground pressure
600 mm	22.580 kg	0,47 kg/cm <sup>2</sup>
700 mm	22.850 kg	0,41 kg/cm <sup>2</sup>
800 mm	23.170 kg	0,37 kg/cm <sup>2</sup>
900 mm	23.440 kg	0,33 kg/cm <sup>2</sup>

Operating weight, including mono boom, 2,9 m arm, 0,8 m<sup>3</sup> bucket, operator, lubricant, coolant, full fuel tank and the standard equipment.